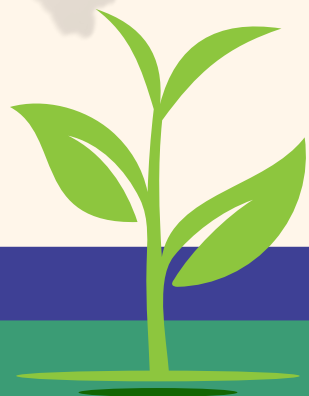
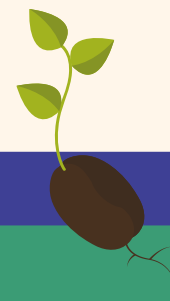


Pragati ka beej Samriddhi ki kheti...



DSIR Recognized
ISO 9001 2015 Certified Company



MISSION



With a focus on continuous improvement and cutting-edge genetic technologies, we aim to be at the forefront of the agricultural industry, creating solutions that address the evolving needs of farmers and consumers alike. Our goal is to contribute significantly to the global effort to build a resilient and nourished future for generations to come.

VISION



Our vision extends beyond the fields; we see a ripple effect across communities, economies, and the environment. By fostering a culture of continuous innovation, responsible practices, and collaboration, we aim to be at the forefront of a movement towards a more secure, nourished, and harmonious world.

USP



Our seed company excels in delivering genetically optimized seeds, ensuring consistently high crop yields.

Let's Connect

Phone : 6354173255

Website

www.reallygreatsite.com

Email

biofreshseeds91@gmail.com



HYBRID TOMATO

RAKSHAK



- Semi determinate plant habit
- 90 to 100 gm fruit weight with good firmness
- Good Keeping Quality
- Intermediate resistance to TLCV

YUVRAJ



- Semi determinate plant habit
- 90 to 100 gm fruit with deep red color
- Suitable for long distance transportation
- Intermediate resistance to TLCV

NI SHAAN



- Intermediate plants
- Maturity in 65-70 days after transplanting
- Deep oblate fruits of 80-90 gm
- Intermediate resistance to ToLCV
- Good Crop Longevity

HIMSAGAR



- Semi determinate plant
- Oblong fruit shape
- Uniform size fruits with deep red color at maturity
- Avg fruit weight: 90 – 110 gm with good firmness
- Intermediate resistance to TLCV

HYBRID CHILLI

KUNTI



- Strong & erect Plants
- Shining and attractive green fruits
- Good Shelf life & good eat set
- 14-16 cm long chilli fruits with 1.5-1.8 cm thickness
- Fruit Weight: 6-7 gm

SUJATA



- Semi erect vigorous plants
- Green colored shiny fruits
- High yielding hybrid
- 13-14 cm length & 1-1.3 cm width

MEENAL 74



- Vigorous & strong plants
- Smooth & Medium Pungent fruits
- Suitable for both fresh & dry purpose
- Medium pungent hybrid with attractive green colors
- 12 – 13 cm long fruits with 1.-3-1.5 cm thickness

SHIKHA



- Dual purpose hybrid
- Dark green fruits with high pungency
- Wrinkled fruits with deep red dry color
- Good color retention
- 15 cm long fruits with 1 cm thickness

HYBRID OKRA

KHUSHI



- Plant Habit: Bushy
- Fruit color: Dark Green
- Av Fruit Length (cm) -10-12
- Days to first: 50-55
- USP: High yield, More branching and Easy to Pick

PARI GOLD



- Tall plans with attractive green color
- Cultivated round the year
- Short internodes
- Long slender dark green fruits with five ridges
- High yielding

GOPIKA



- Medium Tall Plant Type with cut leaves
- Attractive Dark Green Fruit Color
- Av Fruit Length (cm): 12-14
- Days to First Harvest: 45 – 50 days
- USP: Short internode, Good Branching

PURVA



- Tall Plant Type with Medium Cut Leaves
- Attractive Dark Green Fruit Color
- Days to First Harvest: 42-45 days
- USP: Very good for distant market and also good fruit weight



HYBRID BOTTLE GOURD

KOMAL



- Soft tender & cylindrical shape bottle gourd
- The fruit has attractive green stripes on the surface
- Days To First Harvest -45-55
- USP -Good keeping Quality

NIRALI



- Popular variety because of its shiny apple green color
- Fruits are quite straight and early maturity hybrid
- Plant Habit - Medium vine
- Fruit weight 1.5 to 2 Kg
- Crop duration 130 to 150 day

HYBRID SPONGEGOURD

RANI



- Early & profuse fruit set
- Attractive Dark Green Fruit
- 20 to 25 cm long fruits with 100 - 150 gm fruit weight
- Surface Smooth
- Flash Color : White
- High yielding potential

QUEEN



- Early Maturity & Good uniformity
- Attractive light Green Elongate fruits
- 25 to 30 cm long tender fruits with 110-150 gm fruit weight
- Medium vine plant growth habit
- Flash Color : White
- High yielding potential

HYBRID BITTER GOURD

PAWAN



- Attractive dark green fruits with continuous, pointed & flexible spines
- Shorter picking interval
- Suitable for distant transportation
- High yield potential
- Spindle shaped fruit with 10-15 cm fruit length and 150 - 160 gm fruit weight

RAJSHREE



- Early Maturity
- Heavy yield with profile bearing
- Attractive, Shining and dark green fruits
- Suitable for long distance transportation with good keeping quality
- Avg. fruit Length: 22- 24 cm

HYBRID RIDGE GOURD

DHARA



- green fruit with 42-45 cm fruit length
- High yielding hybrid with high number of straight fruits, Good Keeping Quality
- 40 - 45 Maturity duration
- Tolerant against stress conditions
- Days To First Harvest -50-55

HYBRID MUSKMELON

MOHINI



- Attractive orange flesh with aroma
- Avg. Fruit weight 1 Kg & Uniform netting
- High brix content 12 - 16 %
- Uniform fruits & Good yield
- Color turning after maturity

HYBRID WATERMELON

SHEGUN GOLD



- Plant Type - Creeper, Vigorous, Ice-box type
- Maturity - 65-70 Days
- Avg Fruit Weight - 3-5 Kg
- Sweetness / TSS - Sweet, TSS % 13-14
- Tolerance - Excellent Viral
- USP -Crispy

SUPER SHEGUN



- Plant Type - Creeper, Vigorous,
- Heavy weight Ice-box fruit
- Maturity - 65-70 Days
- Flesh Color - Deep crimson with granular texture
- Avg Fruit Weight :- 7 - 8 Kg

BLACKBABY



- Sugar baby type fruits
- Vigorous plants & prolific bearing
- Maturity - 70-75 Days
- Avg Fruit Weight -5 - 7 Kg
- Sweetness / TSS - Sweet, TSS % 13-14
- Tolerance - Excellent Viral & Anthracnose tolerance

AADHYA



- Type-Tiger Stripe
- Jubille elongated oval shaped fruits
- Deep red granule flesh color
- Av Fruit Weight (Kg) -10-12
- Days To First Harvest -65-75
- Tolerant to Abiotic Stress



HYBRID CUCUMBER

MANORAMA

- Light green fruits with very good taste
- Very low bitterness
- Early hybrid & early bulking
- Av Fruit Weight (gm) -150-180
- Days To First Harvest - 45 Days
- USP -High Yield

POLO

- Fruits are strong cylindrical attractive green color
- Fruits are 18 - 25 cm long , 4 - 5 cm thickness average weight 200 - 220 gm.
- Excellent fruit bearing , good market price

GUWAR

SARAS

- Very attractive fruits with light green to green color
- Medium long tender pods
- Very short interval of fruiting
- Good cooking quality
- High yield potential
- Light green straight erect fruits
- Fruit length: 10-13cm

HYBRID FRENCH BEAN

Foggi

- High yielding potential with uniform fruit size
- Attractive fruit color
- Good vine vigour
- Continuous yielder
- Dark green slightly curved fruits
- 25 - 30 cm long fruits with 10 - 15 grams fruit weight
- First harvest after 50 - 55 days

HYBRID SUMMER SQUASH

DABANG-22

- Healthy & Vigorous fruits
- Fruiting starts after 40 - 45 days
- White Flesh
- Early & Frequent fruiting
- Regular & Fast fruiting
- Excellent yield

IMPORTED BEETROOT

RED STAR

- Dark red colour fruits with high yielding
- Small taproot, a very sweet flavour and deep red color
- Inner texture has very low fibers
- Harvest fruits after 90 days of maturity

HYBRID CORIANDER

JOSH

- Good plant vigour
- Maturity duration 35 - 40 days
- Stalk length 20-25 cm
- Late bolting & suitable for multiple harvest

RESEARCH SPINACH

SONA GREEN

- Imported Spinach
- Uniform green tender leaves
- Profuse foliage
- Stalk is green whole plant or leaves are harvested
- Delayed bolting
- Excellent keeping quality

IMPORTED CARROT

RED LONG

- Long cylindrical very long fruit set
- Fruit color: Deep Red
- First Picking:- 50 - 55
- Fruit Length: 18 - 20 cm long fruits
- 150 to 175 gm fruit weight
- Early high yield and uniformity in size as well as shape



HYBRID RADISH

EVERY WHITE

- 10 – 15 inches long fruits
- Net weight 200 – 400 gm
- Early Maturity hybrid(45-50 days)
- Roots are smooth and white
- Roots can stay in the soil for long period after maturity
- Attains good size in smaller duration
- Very late bolting time



IMPORTED RADISH

CHETKI LONG

- Unique short leaved, margins folded inwards like palak leaves spoon shaped
- 7-8 inches long, cylindrical shape, smooth sweet in taste
- Pure white root color
- Maturity after 30-35 days after sowing
- Very late bolting time



PALAK PATTA

- Net weight 200 – 400 gm
- 10 – 15 inches long fruits
- Early Maturity hybrid(50-55 days)
- Roots are smooth and white
- Attains good size in smaller duration
- Very late bolting time



HYBRID BRINJAL

SONATA

- Tall Open ,Non Spiny plants
- Dark black variegated oval fruits
- Cluster fruiting
- High yielding potential
- Fruit Length : 6 – 8cms, width : 5 – 7 cm & weight 60 – 80 gm
- Days To First Harvest – 40- 45
- USP -Profuse Bearing



SHAN

- Tall Open, Non Spiny plants
- Dark black variegated oval fruits
- Cluster fruiting
- Fruit weight 50 - 60 gm ,Length 6 – 8cms & width : 5 – 7 cm
- Days To First Harvest – 40- 45
- USP -Profuse Bearing
- High yielding potential



HYBRID PEA

JADU

- Medium tall with well spread lateral branches
- Green color, tender and very sweet
- 9-10 Seeds / Pod
- Pod color: Dark green attractive
- No of days to Harvest: 65-75 days
- High quality pod with very good shelf life
- Tolerant to Powdery Mildew



HYBRID PUMPKIN

SHITAL

- Flat round fruit with cream to yellow flesh
- Continuous fruit bearing with high yielding potential
- Good LCV Tolerant
- Fruit maturity : 75 – 80 days
- Fruit weight : 4 – 6 kg



PANNA (OVAL)

- Oval shaped fruits with cream to yellow flesh
- Big fruits with higher vine longevity
- Uniform fruit shape & color
- Good LCV Tolerant
- Fruit maturity : 85 – 90days
- Fruit weight : 8 – 10 Kgs



HYBRID CAULIFLOWER

AMBER

- Maturity : 75 – 85 days after transplanting
- Temperate cauliflower with strong vigor and blue green foliage
- White compact dom shaped dense curd
- Excellent self cover leads to excellent curd quality
- Av curd Weight (Kg): 1 - 1.25
- USP -Good Self Blanching

